

## How to Order?

Series No.	Type code	Body size	Combination	QTY	Port size	Drain type	Pressure gauge code	Bracket code	Scale unit	Filter Precision	Thread type
E: Round gauge series	C: Filter+regulator+Lubricator W: Filter+regulator F: Filter R: Regulator L: Lubricator	10: 1000 body 20: 2000 body 30: 3000 body 40: 4000 body 50: 5000 body	10: Two units (Regulator+Lubricator) 00: Others	1000 M5: M5 2000 O1: 1/8" 3000 O2: 1/4" 4000 O2: 1/4" 5000 O6: 3/4" 03: 3/8" 04: 1/2" 06: 3/4" 08: 3/4" 10: 1"	Blank: Manual drain type C: Semi-auto drain D: Auto Drain type	Blank: With pressure gauge N: Without pressure gauge	Blank: With bracket J: Without bracket	Blank: 25 μm 5M: 5 μm	4: Mpa/Psi (Default) 5: Bar/Psi	Blank: G P: PT T: NPT	

### Order Example:

E series regulator, 2000 body size, 1/8 port size, with pressure gauge, with bracket, scale unit is Mpa/Psi, G thread, ERP code is: ER2000-01 4

## Air source treatment unit kits

### ER

NO.	NAME	QTY	MATERIAL
26	Regulate handle	1	Reinforce nylon
25	Symbol ring	1	Reinforce nylon
24	Nut	1	Reinforce nylon
23	Cross screw	4	Carbon steel
22	Spring washer	4	Carbon steel
21	Valve cover	1	Reinforce nylon
20	Regulate bolt	1	Carbon steel
19	Washer	1	POM
18	Regulate Nut	1	Carbon steel
17	Spring	1	Carbon steel
16	Spring seat	1	Carbon steel
15	Diaphragm	1	NBR
14	Diaphragm seat	1	Brass
13	Pipe	1	POM
12	Retainer ring	1	Carbon steel
11	O-ring	1	NBR
10	Plug	1	Carbon steel
9	Valve body	1	Aluminum
8	Spool	1	Brass+NBR
7	Valve core	1	Brass
6	Retainer ring	1	Carbon steel
5	Spring	1	Stainless steel
4	O-ring	1	NBR
3	O-ring	1	NBR
1	Regulator seat	1	ZZnAl-1

### EF

NO.	NAME	QTY	MATERIAL
16	Lock	1	ABS
17	Pin	1	ABS
18	Spring	1	Stainless steel
15	Metall bowl	1	Carbon steel
14	Nut	1	Cu
13	Hex Nut	1	Cu
12	O-ring	1	NBR
11	Drain valve	1	Cu
10	O-ring	1	NBR
9	Spring	1	Stainless steel
8	Valve core	1	Cu
7	Water cup	1	Polycarbonate
6	Drain board	1	ABS
5	Bolt	1	Carbon steel
4	Filter element	1	Cu
3	Blade	1	ABS
2	O-ring	1	NBR
1	Regulator body	1	Aluminum

### EL

NO.	NAME	QTY	MATERIAL
37	Lock	1	ABS
36	Pin	1	ABS
35	Spring	1	Stainless steel
34	Bowl guard	1	Carbon steel
33	Oil cup	1	Polycarbonate
32	O-ring	1	NBR
31	O-ring	1	NBR
30	Oil tube	1	PU
29	Pin	1	Carbon steel
28	Fitting	1	POM
27	Steel ball	1	Carbon steel
26	O-ring	1	NBR
25	Hex screw	4	Carbon steel
24	Spring washer	4	Carbon steel
23	Washer	1	Aluminum
22	O-ring	1	NBR
21	Filter element	1	Brass
20	Screw	2	Carbon steel
19	Reed seat board	1	ZZnAl-1
18	One way valve plate	1	Cu
17	Spring	1	Stainless steel
16	Steel ball	1	Carbon steel
15	Small hole seat	1	Brass
14	Bracket	1	ZZnAl-1
13	Reed seat	1	ZZnAl-1
12	Reed	1	Polycarbonate
11	O-ring valve seat	1	Brass
10	O-ring	1	NBR
9	Regulate needle	1	Brass
8	Lubricator body	1	Aluminum
7	O-ring	1	NBR
6	Oil drop tube	1	Polycarbonate
5	O-ring	1	NBR
4	Oil window	1	Polycarbonate
3	O-ring valve seat	1	ABS
2	O-ring	1	NBR
1	Plug	1	ABS

### EW

NO.	NAME	QTY	MATERIAL
41	Spring	1	Carbon steel
40	Regulate Nut	1	Carbon steel
39	Washer	1	POM
38	Regulate Bolt	1	Carbon steel
37	Symbol ring	1	Carbon steel
36	Cross screw	4	Carbon steel
35	Valve cover	1	Reinforce nylon
34	Nut	1	Carbon steel
33	Symbol ring	1	Reinforce nylon
32	Regulate handle	1	Reinforce nylon
31	Overflow valve seat	1	ZZnAl-1
30	Spring	1	Stainless steel
29	Reamer ring	1	Carbon steel
28	O-ring	1	NBR
27	Valve core	1	Brass
26	Spool	1	Brass+NBR
25	Plug	1	Carbon steel
24	Regulator body	1	Aluminum
23	O-ring	1	NBR
22	Retainer ring	1	Carbon steel
21	Pipe	1	POM
20	Diaphragm seat	1	Brass
19	Diaphragm	1	NBR
18	Diaphragm Pallet	1	Carbon steel
17	Water cup	1	Polycarbonate
16	O-ring	1	NBR
15	Drain board	1	ABS
14	Bolt	1	Carbon steel
13	Filter element	1	Brass
12	Whirling blade	1	ABS
11	Bowl guard	1	Carbon steel
10	Spring	1	Stainless steel
9	Lock	1	ABS
8	Pin	1	ABS
7	Nut	1	Brass
6	Hex Nut	1	Brass
5	O-ring	1	NBR
4	Drain valve	1	Brass
3	O-ring	1	NBR
2	Spring	1	Stainless steel
1	Valve core	1	Brass



## Specifications

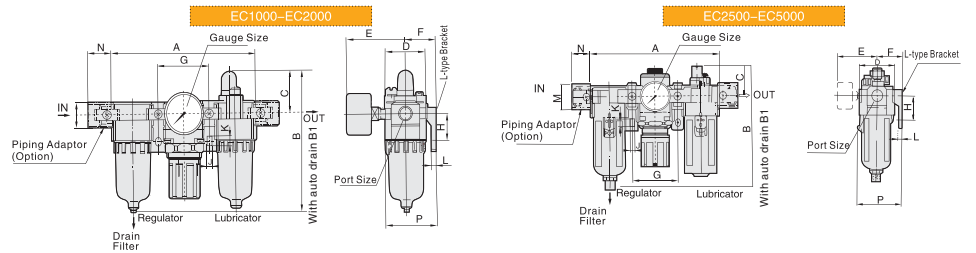
Model	EC1000	EC2000	EC2500	EC3000	EC4000	EC5000
Guaranteed pressure resistance(MPa)	1.5					
Max. working pressure(MPa)	1.0					
Working temperature(°C)	5-60					
Filter precision	40 μm (5 μm is optional)					
Recommended oil	Turbine No.1 Oil ISOVG32					
Bowl material	Polycarbonate					
Bowl guard	None			Available		
Pressure adjusting range(MPa)	0.15-0.85					
Valve type	With overflow					

Model	Specifications			Rated flow (L/min)	Port size (G)	Pressure gauge thread size (G)	Weight (kg)	Accessories
	Filter	Regulator	Lubricator					
EC1000-M5	EF1000	ER1000	EL1000	90	M5	1/16	0.26	Y10L
EC2000-01	EF2000	ER2000	EL2000	1000	1/8	1/8	0.74	Y20L
EC2000-02	EF2000	ER2000	EL2000	1100	1/4	1/8	1.04	Y30L
EC2500-02	EF3000	ER2500	EL3000	1500	1/4	1/8	1.04	Y30L
EC2500-03	EF3000	ER2500	EL3000	2000	3/8	1/8	1.18	Y30L
EC3000-02	EF3000	ER3000	EL3000	1950	1/4	1/8	1.18	Y30L
EC3000-03	EF3000	ER3000	EL3000	2105	3/8	1/8	1.18	Y30L
EC4000-03	EF4000	ER4000	EL4000	4950	3/8	1/4	2.14	Y40L
EC4000-04	EF4000	ER4000	EL4000	5200	1/2	1/4	2.47	Y50L
EC4000-06	EF4000-06	ER4000-06	EL4000-06	5600	3/4	1/4	2.47	Y50L
EC5000-06	EF5000	ER5000	EL5000	6200	3/4	1/4	3.82	Y60L
EC5000-10	EF5000	ER5000	EL5000	6500	1	1/4	3.82	Y60L

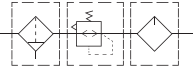
\* The above information is based on 8.0 Bar supply pressure and 6.3 Bar set pressure

\* NPT,PT port size is optional

## Main Dimensions (mm)



Model	Port Size (G)	A	B	B1	C	D	E	F	G	H	J	K	L	M	N	P
EC1000	M5	91	84.5	-	25.5	25	26	25	33	20	4.5	7.5	5	17.5	16	38.5
EC2000	1/8"-1/4"	140	125	163	38	40	56.8	30	50	24	5.5	8.5	5	22	23	50
EC2500	1/4"-3/8"	181	156.5	-	38	53	60.8	41	64	35	7	11	7	34.2	26	70.5
EC3000	1/4"-3/8"	181	156.5	170	38	53	60.8	41	64	35	7	11	7	34.2	26	70.5
EC4000	3/8"-1/2"	238	191.5	194.5	41	70	65.5	50	84	40	9	13	7	42.2	33	88
EC4000-06	3/4"	253	193	196	41	70	69.5	50	89	40	9	13	7	46.2	36	88
EC5000	3/4"-1"	300	271.5	274.5	48	90	75.5	69.8	105	50	12	16	10.5	55.2	40	115



## Specifications

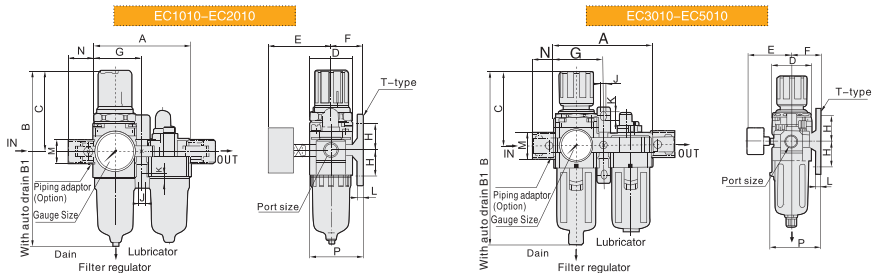
Model	EC1010	EC2010	EC2510	EC3010	EC4010	EC5010
Guaranteed pressure resistance(MPa)	1.5					
Max. working pressure(MPa)	1.0					
Working temperature(°C)	5-60					
Filter precision	40µm ( 5µm is optional )					
Recommended oil	Turbine No.1 Oil ISOVG32					
Bowl material	Polycarbonate					
Bowl guard	None			Available		
Pressure adjusting range(MPa)	0.15-0.85					
Valve type	With overflow					

Model	Specifications						Accessories
	Assembly		* Rated flow (L/min)	** Port size (G)	Pressure gaugethread size (G)	Weight (kg)	Bracket
Filter with pressure reduce	Lubricator						
EC1010-M5	EW1000	EL1000	90	M5	1/16	0.22	Y10T
EC2010-01	EW2000	EL2000	945	1/8	1/8	0.66	Y20T
EC2010-02			960	1/4			
EC3010-02			1874	1/4			
EC3010-03	EW3000	EL3000	1956	3/8	1/8	0.98	Y30T
EC4010-03			4923	3/8			
EC4010-04	EW4000	EL4000	5120	1/2	1/4	1.93	Y40T
EC4010-06	EW4000-06	EL4000-06	5000	3/4	1/4	1.99	Y50T
EC5010-06			6000	3/4			
EC5010-10	EW5000	EL5000	6200	1	1/4	3.20	Y60T

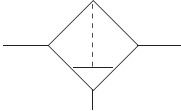
\* The above information is based on 8.0 Bar supply pressure and 6.3 Bar set pressure

\* NPT,PT port size is optional

## Main Dimensions (mm)



Model	Port Size (G)	A	B	B1	C	D	E	F	G	H	J	K	L	M	N	P
EC1010	M5	58	109.5	-	50.5	25	26	25	29	20	4.5	7.5	5	17.5	16	38.5
EC2010	1/8"-1/4"	90	164.5	202.5	78	40	56.8	30	45	24	5.5	8.5	5	22	23	50
EC3010	1/4"-3/8"	117	211	224.5	92.5	53	60.8	41	58.5	35	7	11	7	34.2	26	70.5
EC4010	1/4"-3/8"	154	262	265	112	70	65.5	50	77	40	9	13	7	42.2	33	88
EC4010-06	3/4"	164	267	270	114	70	69.5	50	82	40	9	13	7	46.2	36	88
EC5010	3/4"-1"	195	338	341	116	90	75.5	69.8	97.5	50	12	16	10.5	55.2	40	115



## Specifications

Model	EF1000	EF2000	EF3000	EF4000	EF5000
Guaranteed pressure resistance(MPa)	1.5				
Max. working pressure(MPa)	1.0				
Working temperature(°C)	5-60				
Filter precision	40µm ( 5 µm is optional )				
Bowl material	Polycarbonate				
Bowl guard	None		Available		
Pressure adjusting range(MPa)	0.15-0.85				
Entrance pressure (MPa)	0.15-1.0				

Model	Specifications				Accessories		Drain function	Auto drain model
	*Rated flow (L/min)	** Port size (G)	Bowl capacity (CM³)	Weight (kg)	Bracket			
EF1000-M5	110	M5	4	0.07	-		Manual drain  a.Zero pressure drain b.Manual drain	
EF2000-01	1222	1/8	15	0.19	B240	EF2000-01D		
EF2000-02	1278	1/4				EF2000-02D		
EF3000-02	2006	1/4	20	0.29	B340	EF3000-02D		
EF3000-03	2148	3/8				EF3000-03D		
EF4000-03	5120	3/8	45	0.55	B440	EF4000-03D		
EF4000-04	5430	1/2				EF4000-04D		
EF4000-06	7680	3/4	45	0.58	B540	EF4000-06D		
EF5000-06	8200	3/4				EF5000-06D		
EF5000-10	8500	1	130	1.08	B640	EF5000-10D		

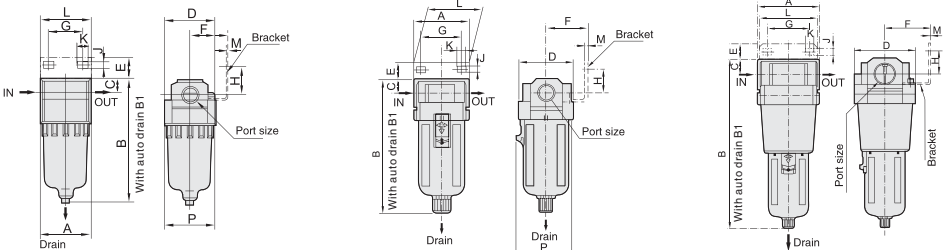
\* The above information is based on 6.3 Bar supply pressure and 1.0 Bar set pressure \* NPT,PT port size is optional

## Main Dimensions (mm)

EF1000-EF2000

EF3000-EF4000

EF5000

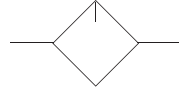


Model	Port Size (G)	A	B	B1	C	D	E	F	G	H	J	K	L	M	P
EF1000	M5	25	66	-	7	25	-	-	-	-	-	-	-	-	26.5
EF2000	1/8"-1/4"	40	97.5	135.5	11	40	17	30	27	22	5.4	8.4	40	2.3	40
EF3000	1/4"-3/8"	53	132.5	146	14	53	16	41	40	23	6.5	8	53	2.3	56
EF4000	3/8"-1/2"	70	168.5	171.5	18	70	17	50	54	26	8.5	10.5	70	2.3	73
EF4000-06	3/4"	75	172.5	175.5	20	70	14	50	54	25	8.5	10.5	70	2.3	73
EF5000	3/4"-1"	90	247.5	250.5	24	90	23	66.5	66	35	11	13	90	3.2	90

# EL Series Air Source Treatment Unit



EL series 3.14



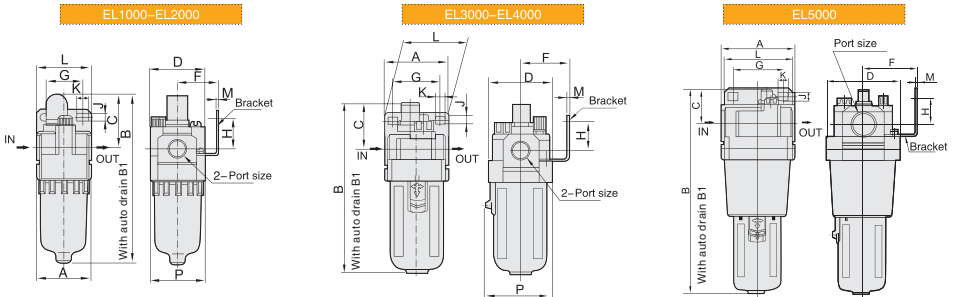
## Specifications

Model	EL1000	EL2000	EL2500	EL3000	EL4000	EL5000
Guaranteed pressure resistance (MPa)	1.5					
Max. working pressure (MPa)	1.0					
Working temperature (°C)	5-60					
Recommended oil	Turbine No.1 Oil ISOVG32					
Bowl material	Polycarbonate					
Bowl guard	None		Available			
Entrance pressure (MPa)	0.15-1.0					

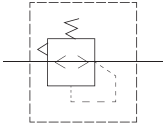
Model	Specifications					Accessories
	Minimal flow of oil drop (L/min)	Rated flow (L/min)	** Port size (G)	Bowl capacity (CM <sup>3</sup> )	Weight (kg)	Bracket
EL1000-M5	4	95	M5	7	0.07	-
EL2000-01	15	1300	1/8	25	0.22	B240
EL2000-02	30	2310	1/4	50	0.50	B340
EL3000-02	40	2375	3/8	130	0.56	B440
EL4000-03	40	5321	3/8	130	0.58	B540
EL4000-04	50	5532	1/2	130	1.08	B640
EL4000-06	50	6700	3/4	130	1.08	B640
EL5000-06	190	7700	3/4	130	1.08	B640
EL5000-10		8000	1			

- \* The above information is based on 6.3 Bar supply pressure, the flow of oil drop is 2-3 drops/min, the temperature of Turbine No.1 oil is 20° C
- \*\* The above information is based on 6.3 Bar supply pressure and 1.0 Bar step down
- \* NPT,PT port size is optional

## Main Dimensions (mm)



Model	Port Size (G)	A	B	B1	C	D	F	G	H	J	K	L	M	P
EL1000	M5	25	81.5	-	25.5	25	-	-	-	-	-	-	-	27
EL2000	1/8"-1/4"	40	122	160	38	40	30	27	22	5.4	8.4	40	2.3	40
EL3000	1/4"-3/8"	54	142	155.5	38	53	41	40	23	6.5	8	53	2.3	56
EL4000	3/8"-1/2"	70	177	180	41	70	50	54	26	8.5	10.5	70	2.3	73
EL4000-06	3/4"	75	177	180	39	70	50	54	26	8.5	10.5	70	2.3	73
EL5000	3/4"-1"	90	254	257	45.5	90	66.5	66	35	11	13	90	3.2	90



## Specifications

Model	ER1000	ER2000	ER2500	ER3000	ER4000	ER5000
Guaranteed pressure resistance(MPa)				1.5		
Max. working pressure(MPa)				1.0		
Working temperature(°C)				5-60		
Pressure adjusting range(MPa)				0.05-0.85		
Valve type	With overflow					

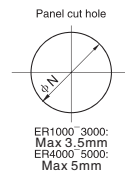
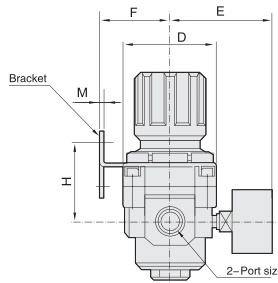
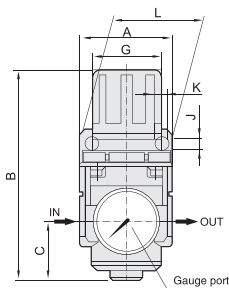
Model	Specifications				Accessories	
	*Rated flow(L/min)	** Port size (G)	Pressure gauge thread size (G)	Weight (kg)	Bracket	
ER1000-M5	100	M5	1/16	0.08	B120	
ER2000-01	1178	1/8			B220	
ER2000-02	1200	1/4	1/8	0.27		
ER2500-02	2000	1/4			B220	
ER2500-03	2000	3/8	1/8	0.27		
ER3000-02	2112	1/4	1/8	0.41	B320	
ER3000-03	2212	3/8				
ER4000-03	5020	3/8				
ER4000-04	5312	1/2	1/4	0.84		
ER4000-06	6000	3/4	1/4	0.94	B420	
ER5000-06	6400	3/4	1/4			
ER5000-10	6600	1	1/4	1.19		

\* The above information is based on 8.0 Bar supply pressure and 6.3 Bar set pressure

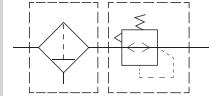
\* NPT,PT port size is optional

## Main Dimensions (mm)

ER1000-ER5000



Model	Port Size (G)	A	B	C	D	E	F	G	H	J	K	L	M	N
ER1000	M5	25	61.5	11	25	26	25	28	30	4.5	6.5	40	2	20.5
ER2000	1/8"-1/4"	40	95	17	40	56.8	30	34	44	5.4	15.4	55	2.3	33.5
ER2500	1/4"-3/8"	53	102.5	25	48	60.8	30	34	44	5.4	15.4	55	2.3	33.5
ER3000	1/4"-3/8"	53	127.5	35	53	60.8	39	40	46	6.5	8	53	2.3	42.5
ER4000	3/8"-1/2"	70	149.5	37.5	70	65.5	49.2	54	54	8.5	10.5	70	2.3	52.5
ER4000-06	3/4"	75	154	40.5	70	69.5	49.2	54	55.5	8.5	10.5	70	2.3	52.5
ER5000	3/4"-1"	90	168	48	90	75.5	49.2	54	62	8.5	10.5	70	2.3	52.5



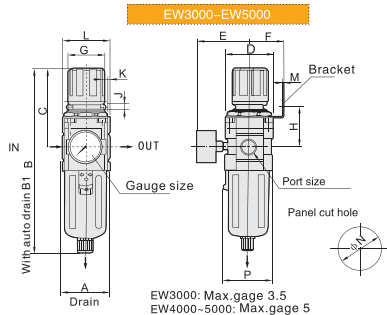
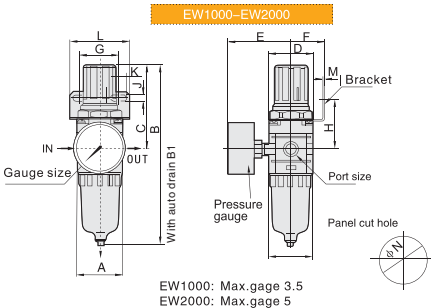
### Specifications

Model	EW1000	EW2000	EW3000	EW4000	EW5000
Guaranteed pressure resistance(MPa)	1.5				
Max. working pressure(MPa)	1.0				
Working temperature(°C)	5-60				
Filter precision	40µm ( 5 µm is optional )				
Bowl material	Polycarbonate				
Bowl guard	None		Available		
Pressure adjusting range(MPa)			0.15-0.85		
Valve type	With overflow				

Model	Specifications					Accessories		Drain function	Auto drain model
	Rated flow (L/min)	Port size (G)	Pressure gauge port size (G)	Weight (kg)	Bracket				
EW1000-M5	100	M5	1/16	0.09	B120	Manual drain	EW2000-01D EW2000-02D EW3000-02D EW3000-03D EW4000-03D		
EW2000-01	1078	1/8	1/8	0.36	B220				
EW2000-02	1165	1/4	1/8	0.36	B220	a. Zero pressure drain b. Manual drain	EW4000-04D EW4000-06D EW5000-06D EW5000-10D		
EW3000-02	1998	1/4	1/8	0.56	B320				
EW3000-03	2177	3/8	1/4	1.15	B420				
EW4000-03	5108	3/8	1/4	1.21	B420				
EW4000-04	5211	1/2	1/4	1.21	B420				
EW4000-06	5750	3/4	1/4	1.21	B420				
EW5000-06	6200	3/4	1/4	1.70	B420				
EW5000-10	6400	1	1/4	1.70	B420				

\* The above information is based on 8.0 Bar supply pressure and 6.3 Bar set pressure \* NPT,PT port size is optional

### Main Dimensions (mm)



Model	Port Size (G)	A	B	B1	C	D	E	F	G	H	J	K	L	M	N	P
EW1000	M5	25	109.5	-	50.5	25	26	25	28	30	4.5	6.5	40	2	20.5	28
EW2000	1/8"-1/4"	40	164.5	202.5	78	40	56.8	30	34	43.5	5.4	15.4	55	2.3	33.5	40
EW3000	1/4"-3/8"	53	211	224.5	92.5	53	60.8	39	40	46	6.5	8	53	2.3	42.5	56
EW4000	3/8"-1/2"	70	262	265	112	70	70.5	49.2	54	53.5	8.5	10.5	70	2.3	52.5	73
EW4000-06	3/4"	75	267	270	114	70	70.5	49.2	54	55.5	8.5	10.5	70	2.3	52.5	73
EW5000	3/4"-1"	90	338	341	116	90	75.5	49.2	54	62	8.5	10.5	70	2.3	52.5	90